



Planning and Budgeting Cloud Services

Customized solutions suited to your industry needs

Evolving business models are changing the way existing businesses operate. Businesses face intense competition, which keeps their 'Office of Finance' under constant pressure to reduce costs, yet, focus on managing business performance. This requires adoption of more capable systems for planning, budgeting and performance management, and improvement in existing financial processes.

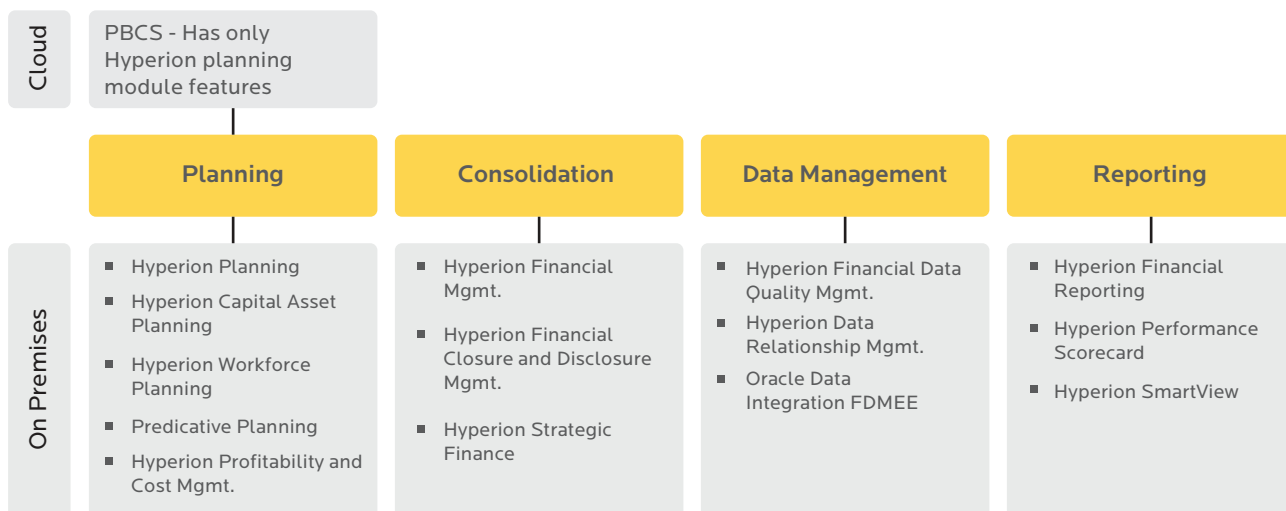


Solution

Businesses need a solution that enables them to effectively perform the above stated activities and to be agile to quickly respond to disruptions and capture newer opportunities. An effective Enterprise Performance Management (EPM) solution allows organizations to gain better control over their business and cater to more strategic needs. It helps organizations to translate business strategy into KPIs, and enables them to evaluate and manage performance, thereby, meeting organization's goals and enhancing business processes efficiency.

What Birlasoft offers

Birlasoft Hyperion Practice works closely with clients through all the stages of their Enterprise Performance Management (EPM) initiative, from conceptualization and realization, to sustained enhancements. Our Practice provides an end-to-end solution required by our clients to enable them achieve their business objectives in a quick and effective manner, at a lower TCO. Birlasoft Hyperion Practice works as valued partner rather than as a mere service provider.



Why Birlasoft

Dedicated EPM and Hyperion Practice

Product evaluation, PoC, implementation, support

Strong Domain and Technical Expertise

Finance/Accounts, Manufacturing, BI and Analytics, Integration

Packaged IP

Industry focused accelerators and best practice such as CEMIX

Mature Delivery Methodology

“Sys-on-Time™” methodology for high quality solution delivery at reduced cost

Birlasoft’s Planning and Budgeting on Cloud Services (PBCS) Model

Our Planning and Budgeting on Cloud Services (PBCS) offer various implementation models based on the scope, implementation timeline and cost, which opens up opportunities for organizations to streamline planning and forecasting, quick implementation, and thereby reducing costs. Key features of our Planning and Budgeting on Cloud Services are:

- Accessibility from anywhere and everywhere
- Metro look dashboard for top management
- Drastic reduction in the Budgeting cycle – From months to Weeks
- Reduction in overall product and implement cost by 40% – 50%

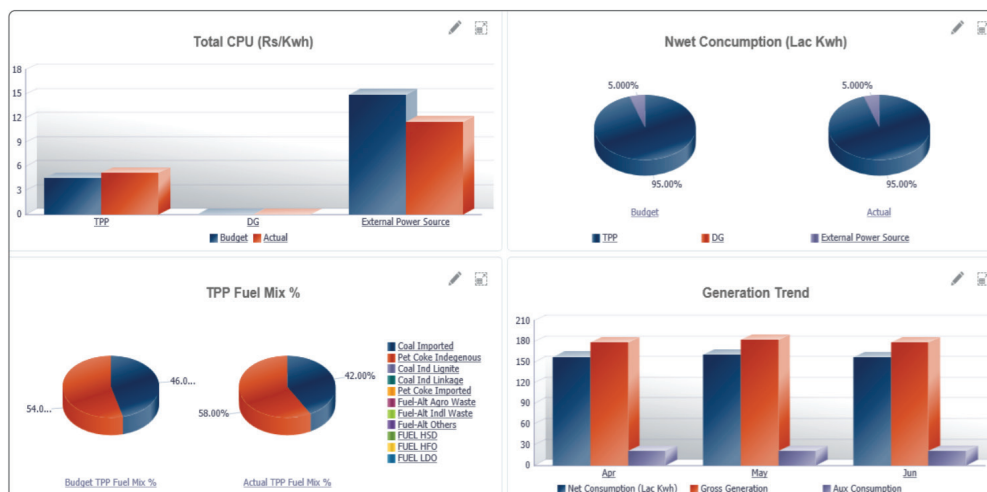
Rapid implementation plans for PBCS:

Deployment Model	Silver	Gold	Diamond
No. of Dimension	6 Fixed + 1 Custom	6 Fixed + 1 Custom	6 Fixed + 2 Custom
Customization of Account, Entity, KPI for vertical markets			
Scenario Covered	Budget	Budget, Actual & Forecast	Budget, Actual & Forecast
No. of Reports	3 – 5	5 – 10	10 – 15
Implementation Timeline	4 – 5 Weeks	7 – 8 Weeks	12 – 13 Weeks

CEMIX

Our Planning and Budgeting on Cloud Services (PBCS) offer various implementation models based on the scope, implementation timeline and cost, which opens up opportunities for organizations to streamline planning and forecasting, quick implementation, and thereby reducing costs. Key features of our Planning and Budgeting on Cloud Services are:

- Detailed cost drivers (Production capacity, Power & Fuel Cost, etc.)
- Preconfigured model/ dimensions for plant, Chart of accounts, Products etc.
- Pre-built dashboards and financials reports in order to measure performance of critical KPIs



ORACLE Platinum Partner



RESOURCES

oracle@birlasoft.com | birlasoft.com

Enterprise to the Power of Digital™

Birlasoft combines the power of domain, enterprise and digital technologies to reimagine business processes for customers and their ecosystem. Its consultative and design thinking approach makes societies more productive by helping customers run businesses. As part of the multibillion diversified CK Birla Group, Birlasoft with its 10,000 engineers, is committed to continuing our 150 year heritage of building sustainable communities.