



Warehouse Management Extended (WMX)

Warehouse Operations using Mobiles,
Scanners, or Smart Glasses

Warehouse Management Extended (WMX) solution from Birlasoft helps businesses to automate warehouse management processes. It is an extensible solution that supports integration with all leading ERPs and supports various devices – hand-held scanners, mobile phones and tabs, and Smart Glasses.



Management

- Low cost Automation
- Improved Customer Satisfaction
- Reduction in overall operational costs

30%
Increased
Productivity



Warehouse Manager

- Real-time access to inventory information
- Enhanced Equipment Utilization
- Improved Material Tracking
- Optimized Inventory and Parts Planning
- Effective Warehouse Operations

40%
Improved Picking
Accuracy



Warehouse Worker

- Data capture in real time
- Picking Accuracy
- Improved Visibility
- Increased Productivity

25%
Improved
TAT

Device Extensibility



BARCODE SCANNERS

- Windows and Android based hand-held scanners
- Rugged devices
- Supports high-performance, omni-directional scanning
- Industry-leading battery performance



SMARTPHONE AND TABS

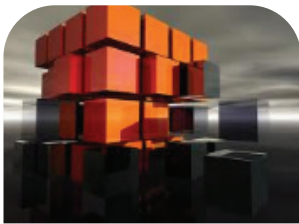
- Smart Phone and Tabs running Android and iOS OS, supported by add-on Bluetooth scanners
- > 40% savings on devices resulting in quicker ROI
- Large form factors helps in quicker updates and improves productivity



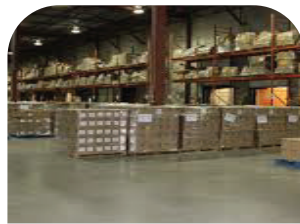
SMART GLASS

- ERP & SCM integration for accelerating pick, pack, ship process
- 25% - 30% increase the Picking Productivity with "Hands-Free, Heads-up" Visual workflow and voice assistance
- 6X reduction in Picking Errors with the use of Augmented Reality

Supported Warehouse Operations



Receiving (Inbound) and Pick, Pack, Ship (Outbound)



Advanced Warehousing



Manufacturing



Standard Inventory

Our Differentiators



Customized for Businesses

WMX is modular and can be customized according to business size, from small to large.



Low TCO

WMX leverages existing infrastructure to achieve lower TCO and reduced initial investment.



Scalable Platform

Platform is open and extensible to connect backend upstream / downstream system / third party software

To learn more about how Birlasoft's Warehouse Management Extended solution can help you improve the effectiveness and efficiency of your business while delivering measurable results, contact us at digital@birlasoft.com



RESOURCES

digital@birlasoft.com | birlasoft.com

Enterprise to the Power of Digital™

Birlasoft combines the power of domain, enterprise and digital technologies to reimagine business processes for customers and their ecosystem. Its consultative and design thinking approach makes societies more productive by helping customers run businesses. As part of the multibillion diversified CK Birla Group, Birlasoft with its 10,000 engineers, is committed to continuing our 150 year heritage of building sustainable communities.